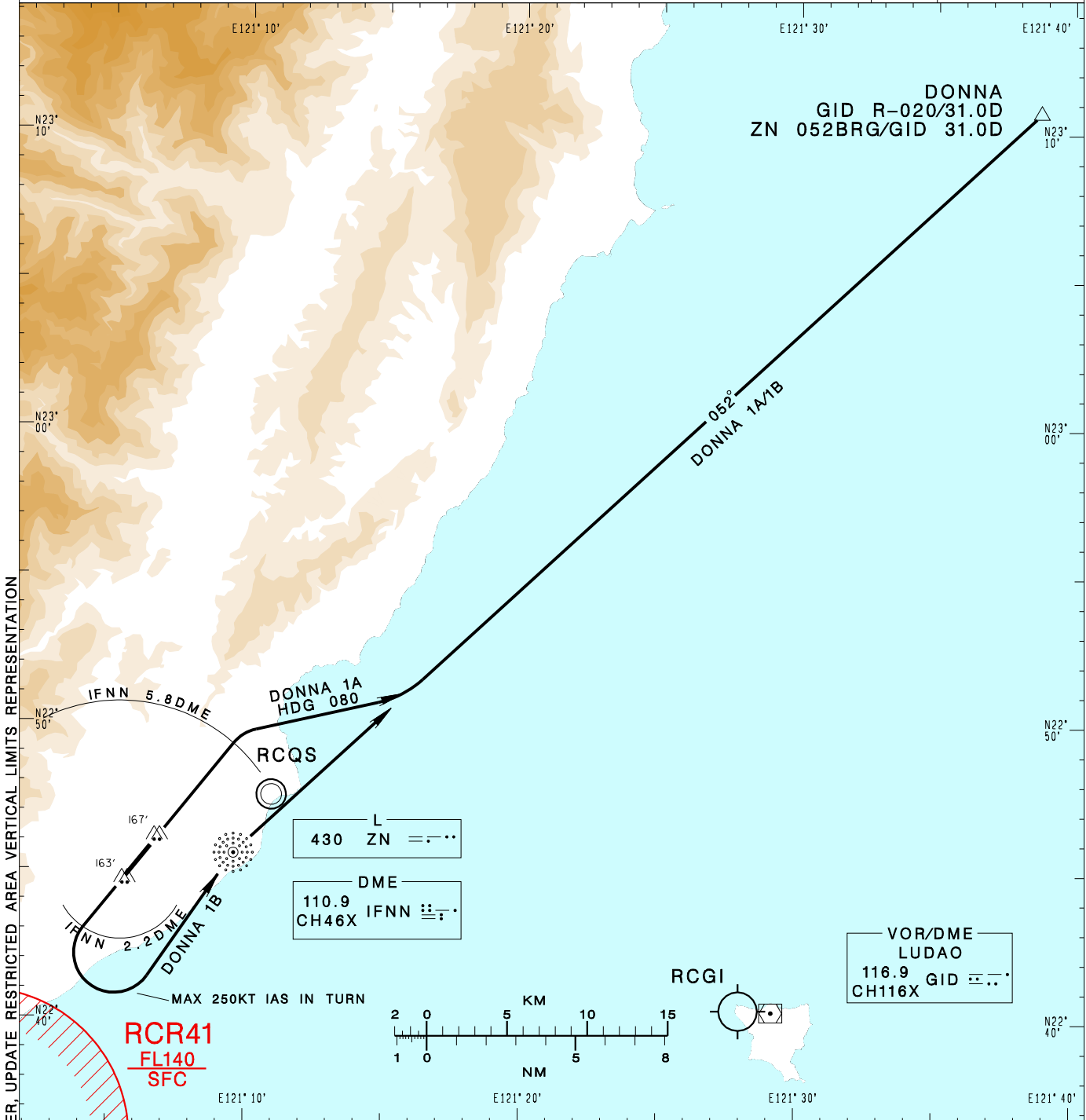


**臺東/豐年機場**  
TAITUNG/FONGNIAN AD

RCFN SID  
DONNA 1A(RWY04)  
DONNA 1B(RWY22)

KAOSIUNG APP 119.4 228.2	FONGNIAN TWR 118.1 236.6	ATIS 127.0	VAR 4° W	
Apt Elev: 143'		Trans Level: FL130		
BEARINGS ARE MAGNETIC; DISTANCES ARE NAUTICAL MILES; ELEVATIONS, HEIGHTS IN FEET				



CHANGES: NEW PAGE NUMBER, UPDATE RESTRICTED AREA VERTICAL LIMITS REPRESENTATION

**DONNA ONE ALFA DEPARTURE**  
Depart RWY HDG until IFNN 5.8D, then turn right HDG 080 to track ZN 052BRG to DONNA to join B591.

**DONNA ONE BRAVO DEPARTURE**  
Depart RWY HDG until IFNN 2.2D, then turn left direct to ZN, then track ZN 052BRG to DONNA to join B591.

**NOTE**

- DONNA 1A: Requires a minimum climb gradient of 6.6%(400ft/NM) until established on ZN 052BRG.
- DONNA 1B: Requires a minimum climb gradient of 6.3%(383ft/NM) until ZN.
- Caution close-in obstacles (trees & poles): 167ft MSL, 96m northeast of RWY22 THR & 163ft MSL, 69m south of RWY04 THR.
- High terrain around the airport.